



20 Amp Hopper Level Control

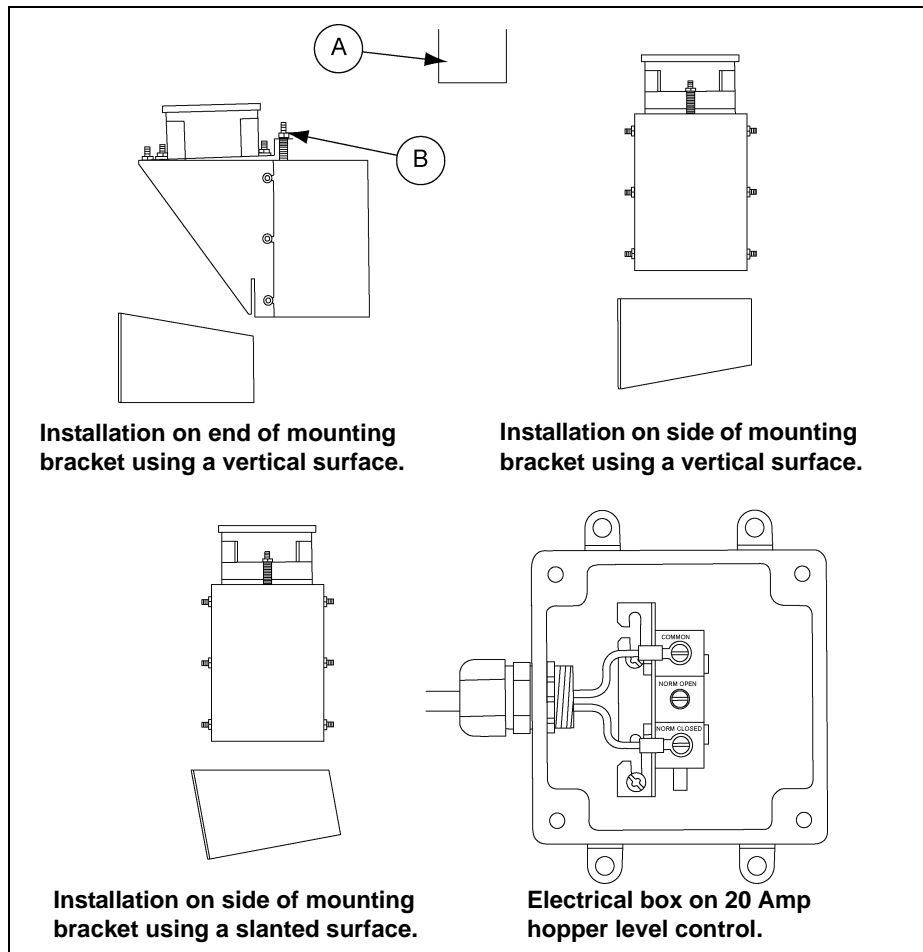


Figure 1

Installation

The 20 Amp hopper level control can be mounted to either a vertical or slanted surface. It can also be mounted to the end or side of the mounting bracket to change the distance from the square PVC tube to the mounting surface. In either case bolt the mounting bracket to the wall using 1/4" bolts and nuts. Slide the hopper level control on the mounting bracket using the slots as shown in the [Figure 1](#). Position the drop tube "A" next to the square PVC tube so that the feed fills up the feeder and overflows into the tube actuating the paddle.

Paddle Positioning

1. Make sure the hopper level control is installed properly with no feed in front of the paddle.
2. Turn nut "B" which has the spring underneath it clockwise until the switch actuates (clicks).
3. Turn the nut back counterclockwise until switch deactivates.
4. Turn nut an additional two (2) full turns counterclockwise.

Date: 01-01-15

Printed in the U.S.A.
 Copyright © 2015 by The GSI Group, LLC
 www.gsiag.com



PNEG-810

PNEG-810

Page 1 of 1

CN-315800