

# SEE THE DIFFERENCE

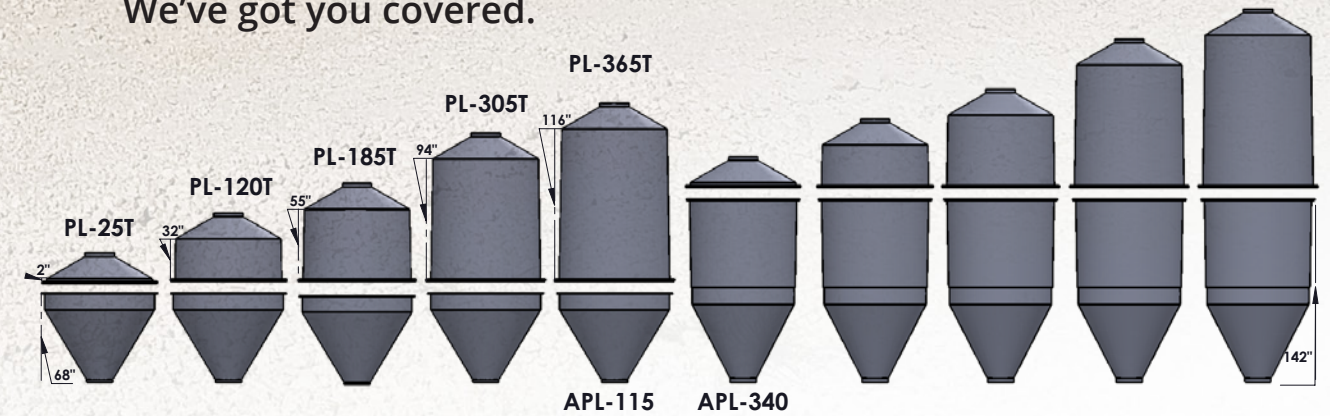
POLYBIN PAYBACKS | CUT FEED OUTAGES & REDUCED LABOR



**POLYBIN FEATURES:**

- Visible feed level
- Won't dent
- Up to 18 ton capacity
- Corrosion resistant for long life

Whatever your tonnage...  
Whatever your need...  
We've got you covered.



## 9'6" POLYBINS



### NEW 9'6" DIAMETER POLYBIN SERIES

New improved lower metal auger boot transition ring on all 9'6" & 7' Diameter Polybins.

**ALL THE GREAT FEATURES YOU HAVE COME TO EXPECT FROM POLYBIN IN A LARGER ONE PIECE BIN CONSTRUCTION.**

#### 9'6" DIAMETER

MODEL#	CAPACITY CU. FT.	BUSHEL	TONS(2000 LBS)	M.TONS(2200 LBS)	FILL HT.
PL-610	612	490	12.24	11.13	17' 2"
PL-770	771	617	15.42	14.02	19' 5"
PL-885	884	708	17.68	16.07	21' 2"

*\*Tonnes calculated at 40 lbs./cu. ft.*

## 7' POLYBINS

### MAXIMIZE YOUR PROFITABILITY... THROUGH PROPER FEED STORAGE AND REDUCED FEED OUTAGES

Prairie Pride by PW Aire has developed the Futures Bin today in our POLYBINS. Our POLYBIN has features that can never be matched by steel bins. Check the list of features below and you will agree that POLYBIN is the bin for your needs.

- Visible Feed Level
- 7 Year Warranty, the Longest in the Industry
- Corrosion Resistant For Long Life
- Large Poly Bins have 60 Degree Cone & Ultra Smooth interior finish for easy, even feed flow.
- Reduced feed outages with the ultra smooth cone feed flow
- Large Poly Bins have 35 Degree Roof for maximizing fill height
- Easy to Assemble
- Heavy duty steel ring and support stand
- Large 22" fill opening
- Ideal strength and flow characteristics for high moisture feeds, corn, soybean, salt, concentrates (premix), etc.

#### OPTIONAL ACCESSORIES:

- Remote lid opener with double spring hold down.
- Poly auger boot for multiple size straight augers 2" - 4".
- Roller slide gate
- Cyclone for proper receiving of pneumatically delivered feed.
- Sturdy steel ladders for all bin sizes.



New improved lower metal auger boot transition ring on all 9'6" & 7' Diameter Polybins.

#### 7' DIAMETER

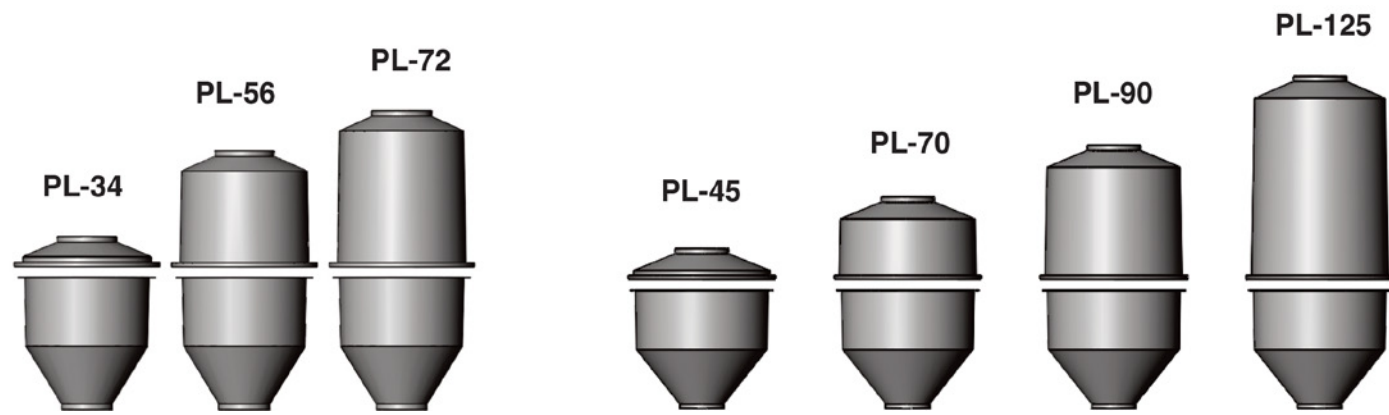
MODEL#	CAPACITY CU. FT.	BUSHEL	TONS(2000 LBS)	M.TONS(2200 LBS)	MAX WT. CAP/CU.FT.	FILL HT.
PL-140	140	112	2.8	2.54	85 lbs.	9' 6"
PL-235	234	187	4.68	4.25	85 lbs.	12' 3"
PL-300	302	241	6.04	5.48	85 lbs.	14'
PL-420	418	333	8.26	7.51	60 lbs.	17' 6"
PL-480	480	384	9.6	8.73	55 lbs.	19' 4"
PL-365	365	292	7.3	6.64	75 lbs.	15' 4"
PL-460	459	367	9.18	8.35	60 lbs.	18' 2"
PL-525	527	421	10.54	9.58	55 lbs.	19' 10"
PL-645	642	512	12.76	11.6	45 lbs.	23' 3"
PL-705	705	563	14.1	12.82	40 lbs.	25' 2"

*\*Tonnes calculated at 40 lbs./cu. ft.*

# 4' & 5' POLYBINS

## HAVE LIMITED SPACE IN A TIGHT LOCATION? WE HAVE THE SOLUTION!!!

Our 4 and 5 ft diameter Polybins have all the same features as our larger diameter bins and take up much less space.



### 4' DIAMETER

MODEL#	CAPACITY CU. FT.	BUSHEL	TONS(2000 LBS)	M.TONS(2200 LBS)	MAX WT. CAP/CU.FT.	FILL HT.
PL-34	34	27	0.68	0.62	85 lbs.	6' 9"
PL-56	56	45	1.12	1.02	85 lbs.	9' 2"
PL-72	72	58	1.44	1.3	85 lbs.	10' 7"
PL-80	83	66	1.67	1.51	85 lbs.	11'

### 5' DIAMETER

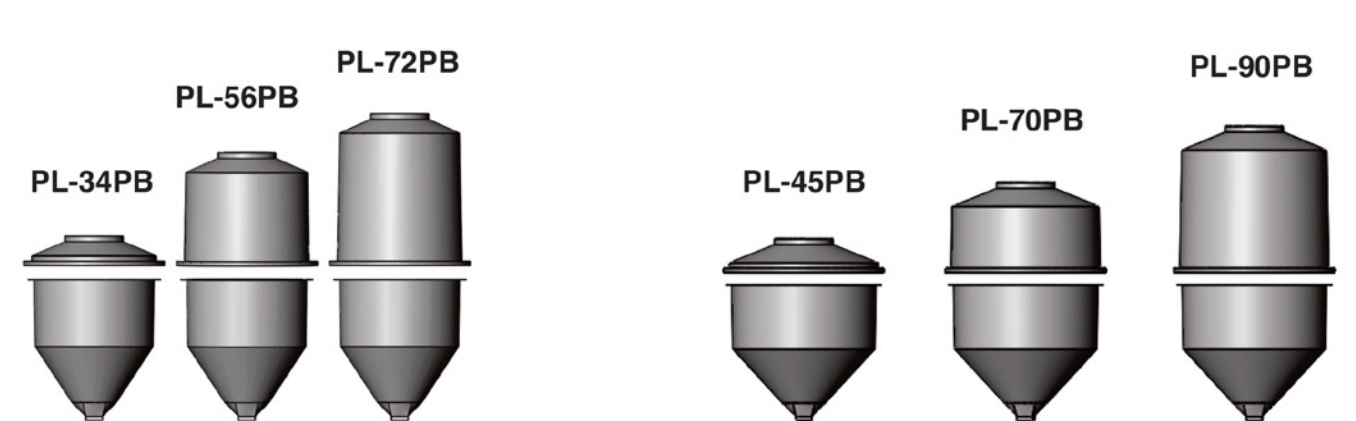
MODEL#	CAPACITY CU. FT.	BUSHEL	TONS(2000 LBS)	M.TONS(2200 LBS)	MAX WT. CAP/CU.FT.	FILL HT.
PL-45	45	36	0.9	0.82	85 lbs.	7'
PL-70	72	58	1.44	1.3	85 lbs.	9' 1"
PL-90	94	75	1.88	1.7	85 lbs.	10' 9"
PL-125	126	100	2.52	2.29	60 lbs.	12' 8"

\*Tonnes calculated at 40 lbs./cu. ft.

# PORTABIN

## PORTABIN FEATURES:

- 4' and 5' diameter models
- Large 22" diameter fill opening.
- Visible material level.
- 55° cone with ultra smooth interior for easy even flow.
- Forklift & pallet jack useable.
- 6" x 10" Slide gate.
- Heavy duty corrosion resistant polyethylene bin.
- Galvanized steel stand.



### 4' DIAMETER

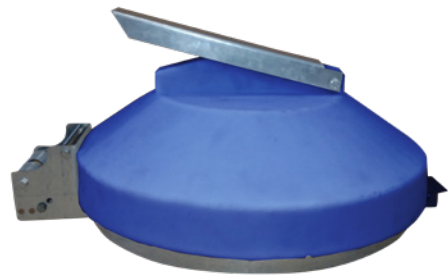
MODEL#	CAPACITY CU. FT.	BUSHEL	TONS(2000 LBS)	M.TONS(2200 LBS)	MAX WT. CAP/CU.FT.	FILL HT.
PL-34PB	34	27	0.68	0.62	85 lbs.	5' 10"
PL-56PB	56	45	1.12	1.02	85 lbs.	8'
PL-72PB	72	58	1.44	1.3	60 lbs.	9' 4"

### 5' DIAMETER

MODEL#	CAPACITY CU. FT.	BUSHEL	TONS(2000 LBS)	M.TONS(2200 LBS)	MAX WT. CAP/CU.FT.	FILL HT.
PL-45PB	45	36	0.9	0.82	85 lbs.	6'
PL-70PB	72	58	1.44	1.3	60 lbs.	7' 8"
PL-90PB	94	75	1.88	1.7	45 lbs.	9' 4"

\*Tonnes calculated at 40 lbs./cu. ft.

# POLYBIN ACCESSORIES



## PLASTIC FEED BIN LIDS

- Opens completely to below the collar top
- Double spring load for strong hold down
- Factory assembled for easy installation
- Adapts to multiple roof pitches
- Domed plastic weather resistant lid
- Collar band clamp allows easy installation in 360° orientation

### SWING CLEAR LID



ITEM/MODEL#	ITEM DESCRIPTION
PWLIDKIT	Collar Mount & Lid

## ROLLER SLIDE GATE



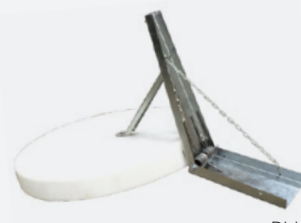
PLSLIDE-SL

## 15" SCREW LID



PLHATCH

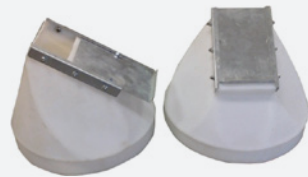
## LID & OPENER KIT



PLLIDKIT

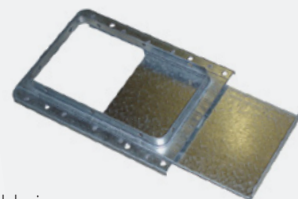
## BOOT TRANSITION WITH SLIDE GATE

NEW BUCKET FILLER



PLSLIDE-BOOT

## 6X10 SLIDE GATE



Available in stainless steel

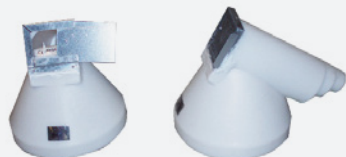
PLBOOT-SLIDE

## CYCLONE RECEIVER



PLCYCLONE

## STRAIGHT AUGER BOOT TRANSITION



PLBOOT-S

## BOOT TRANSITIONS



PLBOOT-90

PLBOOT-30

## STAINLESS STEEL ACCESSORIES AVAILABLE



# SPECIALTY APPLICATIONS

**CUSTOMERS USE OUR VARIOUS BOTTOMS AND TOPS OR COMPLETE POLYBIN MODELS AND CUSTOMIZE THEIR OWN STEEL STAND SYSTEM TO COMPLETE THEIR REQUIRED APPLICATION.**

Polybins are manufactured of FDA Approved polyethylene.



OUR VERSATILE BINS FULFILL UNIQUE APPLICATIONS IN A VARIETY OF SETTINGS AND USAGE

## HEAVY DUTY SERIES



## GRIS CASE

