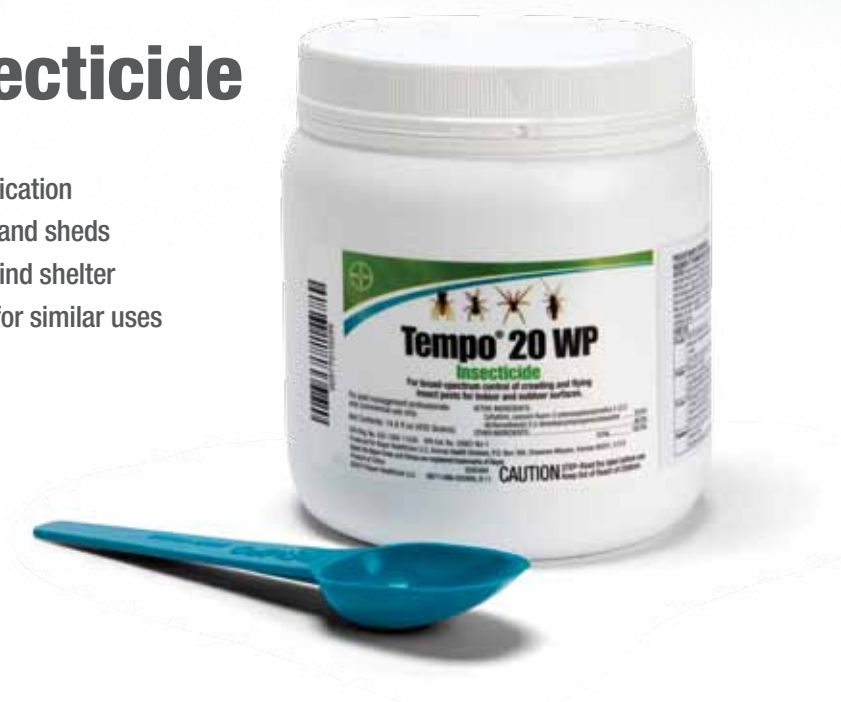




Tempo[®] 20 WP Insecticide

- 20% cyfluthrin wettable powder
- General surface, spot, mist or crack and crevice application
- For use in and around animal facilities, outbuildings and sheds
- Apply where pests have been seen or found, or can find shelter
- Can be tank-mixed with other pesticides registered for similar uses unless specifically prohibited



Product size and code

- ▶ 420 g jar with 5 g (1 tablespoon) scoop – 08711286-035999

Coverage

- ▶ 1,000 sq ft/10 to 20 g

Active ingredient

- ▶ cyfluthrin 20%

If you've determined rotation is necessary, Rotate from: organophosphates
(e.g., Vapona[®] Concentrate Insecticide, Ravap[™] EC)

Rotate from: neonicotinoids
(e.g., Credo[®] SC Insecticide)

For Premise Use Only

	Flies	Ticks	Gnats	Mosquitoes	Darkling beetles	Ants	Spiders	Other listed pests
Barns	✓	✓	✓	✓	✓	✓	✓	✓
Stables	✓	✓	✓	✓	✓	✓	✓	✓
Other animal housing	✓	✓	✓	✓	✓	✓	✓	✓

Tempo[®] 20 WP Insecticide

See product label for complete product information, indications and application instructions.

Tempo® 20 WP Insecticide

For broad-spectrum control of crawling and flying insect pests for indoor and outdoor surfaces.

ACTIVE INGREDIENT:

Cyfluthrin, cyano(4-fluoro-3-phenoxyphenyl)methyl 3-(2,2-dichloroethenyl)-2,2-dimethylcyclopropanecarboxylate	20%
OTHER INGREDIENTS	80%
	100%

EPA Reg. No. 432-1302-11556

EPA Est. No. 33967-NJ-1

STOP – Read the label before use.

Keep out of reach of children.

CAUTION

PRECAUCION AL USUARIO: Si usted no puede leer o entender inglés, no use este producto hasta que la etiqueta le haya sido explicada ampliamente. (TO THE USER: If you cannot read or understand English, do not use this product until the label has been fully explained to you.)

PRO FACTS

- Quick Knockdown & Residual Control
- Low Odor
- Non-staining

Tempo® 20 WP Insecticide	• Wettable powder containing 20% cyfluthrin
CONTROLS	• Indoor Pests • Outdoor/ Perimeter Pests <i>For list of specific insects, see directions for use</i>
WHERE TO APPLY	Apply where pests have been seen or found, or can find shelter. • In and around buildings and structures
COVERAGE	• Makes up to 42 gallons of finished spray solution for indoors. (420 g size) • Treats up to 42,000 sq ft. outdoors. (420 g size)
MIXING INFORMATION	• Mix the appropriate amount of Tempo® 20 WP Insecticide with water. • May tank mix with other pesticides currently registered for similar uses, unless specifically prohibited.
HOW TO APPLY	• General surface spot, mist, or crack & crevice application.
RE-APPLY	• Every 7 to 10 days, if needed.
RE-ENTRY	• Avoid contact with treated surfaces until dry. • People and pets may re-enter after the treated area is dry.
APPLICATION RESTRICTIONS	• Do not water the treated area to the point of run-off. • Do not make applications during rain. • All outdoor applications must be limited to spot or crack-and-crevice treatments only, except for the following permitted uses: (1) Treatment to soil or vegetation around structures; (2) Application to lawns, turf or other vegetation; (3) Applications to building foundations, up to a maximum height of 3 feet. • Other than applications to building foundations, all outdoor applications to impervious surfaces such as sidewalks, driveways, patios, porches and structural surfaces (such as windows, doors, and eaves) are limited to spot and crack-and-crevice applications, only. • Application is prohibited directly into sewers or drains, or to any area like a gutter where drainage to sewers, storm drains, water bodies, or aquatic habitat can occur. Do not allow the product to enter any drain during or after application.
QUESTIONS	For questions or comments, call toll-free 1-800-633-3796

DIRECTIONS FOR USE

It is a violation of Federal law to use this product in a manner inconsistent with its labeling.

IMPORTANT: Read entire label and Conditions of Sale before using Tempo® 20 WP Insecticide.

Do not allow children or pets to enter treated areas until surfaces are dry.

STRUCTURAL PESTS

FOR RESIDUAL PEST CONTROL IN AND AROUND BUILDINGS, STRUCTURES AND FOOD/FEED HANDLING ESTABLISHMENTS.

Use Tempo® 20 WP Insecticide as a general surface, spot, mist, or crack and crevice treatment in and around buildings and structures. This includes factories, warehouses, and food processing facilities. For a list of common facilities where this product may be used, see Appendix.

INDOOR PESTS

GENERAL PESTS

<u>Crawling Pests</u>			
Ants (except Pharaoh)	Clothes moths	Darkling beetles	Pillbugs
Bedbugs	Cluster fly	Earwigs	Silverfish
Carpet beetles	Cockroaches	Firebrats	Sowbugs
Centipedes	Crickets	Millipedes	Spiders
<u>Beetles</u>			
(exposed adults & immature stages)	Dermestid	Leather	Red flour
Cadelle	Drugstore	Lesser grain borer	Rice weevil
Cigarette	Granary weevil	Lesser mealworm	Sawtoothed grain
Confused flour	Hide	Merchant grain	Warehouse
	Larder	Mealworm	
<u>Moths</u>			
Indian meal	<u>Flying Pests</u>		
Mediterranean flour	Flies	Midges	Yellow Jackets
Hornets	Gnats	Moths	
	Wasps		

WHERE TO APPLY	Apply where pests have been seen or found, or can find shelter. Use a general surface, spot, mist, or crack and crevice application.
USE RATE	0.05%—10 g (2 scoops)/gal water 0.1%—20 g (4 scoops)/gal water • Use high rate for severe infestations, faster knockdown, and longer residual. • Always use the high rate for bees, wasps, yellow jackets and hornets.
HOW TO APPLY (Also see APPLICATION FOR INDOOR PESTS)	• Remove or tightly cover fish tanks and disconnect aerators during application. • Remove pets during application and until treated surfaces are completely dry. • Avoid contact with treated surfaces until dry. • Wear safety glasses, goggles, or face shield and a dust/mist respirator when treating overhead areas. <u>General Surface Applications</u> • Use a low-pressure system (do not exceed 50 psi at nozzle tip), with a fan-type nozzle to apply the dilution uniformly. <u>Spot, Mist, or Crack and Crevice Applications</u> • Apply directly into voids, cracks and crevices using spray equipment. • Use a low-pressure system (do not exceed 50 psi at nozzle tip), with a pinpoint or variable pattern nozzle or applicator equipment that delivers low volume treatments, such as the Micro-Injector® or Actisol®.
WHEN TO APPLY	• When pests are seen or found • Re-apply every 7 to 10-days if needed.
MIXING INFORMATION	• Add product when filling spray tank with water; shake or agitate mixture. • Diluted spray mixture can be stored overnight. Agitate before using. Can be tank mixed with other pesticides currently registered for similar uses. To be sure of physical compatibility, first prepare a sample in a small jar using the proper proportions of water and products. Follow the most restrictive of labeling directions and precautions. Do not exceed label rates.
RESTRICTIONS	• Do not treat entire area of floor or floor coverings. • Do not apply where electrical short circuits can occur. Use a dust or dry bait in these areas. • Do not apply to furniture or upholstery where prolonged contact by humans will occur. • Do not apply as a space spray.
ADDITIONAL DIRECTIONS FOR FOOD AND FEED HANDLING ESTABLISHMENTS	
WHERE TO APPLY	Applications may be made to both Food/Feed and non-food areas of food and feed handling establishments. Food/Feed handling establishments are defined as places other than private residences in which exposed food/feed is held, processed, prepared, or served. Includes areas for: • receiving, storing and packing food • preparing food • edible waste storage • enclosed processing systems (mills, dairies, edible oils, syrups) of food. Serving areas where food is exposed and the facility is in operation are also considered food areas.
USE RATE	• Apply as a general surface spot, mist, or crack & crevice application. 0.05%—10 g (2 scoops)/gal water 0.1%—20 g (4 scoops)/gal water • Use high rate for severe infestations, faster knockdown, and longer residual.
HOW TO APPLY (Also see INDOOR PESTS)	<u>General Surface Applications</u> Cover or remove all food processing and handling equipment before treatment. After applying where food is commercially prepared or processed, wash all handling and processing equipment, benches, shelving, and other surfaces which food will contact. Rinse thoroughly with clean, fresh water. Do not apply to surfaces in food-handling areas when facility is in use or when foods are exposed. Do not apply directly to food. <u>Spot or Crack & Crevice Applications</u> Spot or crack and crevice application is permitted while facility is in use. Cover or remove food from area being treated. Do not apply directly to food or food handling surfaces.
APPLICATION FOR INDOOR PESTS	
GENERAL PESTS	• Use a coarse, low-pressure spray. • Treat entry points such as around water pipes, doors, windows, and eaves. • Treat areas where pests normally feed or hide such as baseboards, corners, around water pipes, under refrigerators, cabinets, sinks, and stoves, being sure to spray cracks & crevices. Spot treat floor or rugs beneath furniture, in closets, and storage areas, but do not apply to entire floor area. • Do not use as a "space spray". • IGR Note: This product can be tank mixed with an insect growth regulator (IGR) for extended cockroach control.
ANTS	• Apply to ant trails on walls, tile, baseboards, around pipes, under cabinets, and other places where ants are active. • Treat entry points such as windows and doors and the outdoor perimeter. • For best results, treat nests when possible.
PANTRY AND STORED PRODUCT PESTS	• For best results, clean area before treating. Remove and destroy infested food. Discard food accidentally contaminated with spray. • For cupboards, shelving, or food storage areas: Remove utensils, exposed food, shelf paper, and other items before spraying. When dried, cover shelves with clean paper before replacing items.
PESTS IN LIVESTOCK HOUSING STRUCTURES including poultry houses & pet kennels	• Apply as a general surface and/or a crack and crevice spray. • For best results, clean facilities before applying and treat outdoor perimeter areas. • Do not apply indoors where animals other than cattle or horses are present. • Do not apply to animal feedstuffs or watering equipment. For best result in the high alkaline environment of broiler houses due to litter content, pre-acidify mix tank water to a pH of 5.0 or less prior to mixing with water-miscible Tempo.

Acidifier	Rate
white vinegar	½ cup per one gallon
citric acid	1 oz per 18 gallons
sodium bisulfate (poultry water treatment; PWT)	1 oz per 32 gallons

FLYING INSECTS • Apply to surfaces where pests collect or rest.

OUTDOOR/PERIMETER PESTS

Ants	Centipedes	Elm leaf beetle	Flies	Midges	Scorpions	Ticks
Bees	Cockroaches	Fire ants	Gnats	Millipedes	Silverfish	Wasps
Boxelder bugs	Cluster fly	Firebrats	Ground beetles	Moths	Sowbugs	Yellow jackets
Carpenter ants	Crickets	Fleas	Hornets	Pillbugs	Spiders	

WHERE TO APPLY

- Apply where pests have been seen or found, or can find shelter.
- Apply to buildings, porches, patios, garages, fences and other areas where pests are found.
- To prevent infestation, treat the building foundation, walls, and around doors, windows, and soffits where pests are active or may enter or hide; also treat the soil, turf, or other substrates adjacent to buildings

USE RATE

- 10 to 20 g (2 to 4 scoops) / 1000 sq ft See Table 1 for mixing directions.
- For fire ants and flying pests
0.05% — 10 g (2 scoops) /gal water
0.1% — 20 g (4 scoops) /gal water
- Always use the high rate for fire ants, bees, wasps, yellow jackets and hornets.
- Use high rate for severe infestations, faster knock down, and longer residual.

HOW TO APPLY (Also see APPLICATIONS FOR OUTDOOR/PERIMETER PESTS)

- **Perimeter Treatment:** To help prevent infestation of structures, treat area adjacent buildings in a band up to 10 feet wide. Also treat the building foundation to a height of 2 to 3 feet in areas where pests are active or can find entrance.
- Apply just enough dilution to adequately cover the area without excessive dripping or runoff.

PERIMETER PESTS)

Volume can vary depending on the surface type treated. For example, mulch requires more spray than bare soil. If mulch is heavy, rake it back to expose soil before treating.

- Avoid contact with treated surfaces until dry.

WHEN TO APPLY

- When pests are seen or found
- Re-apply every 7 to 10-days if needed.

MIXING INFORMATION

- Add product when filling spray tank with water; shake or agitate mixture.
- Diluted spray mixture can be stored overnight. Agitate before using.

Can be tank mixed with other pesticides currently registered for similar uses. To be sure of physical compatibility, first prepare a sample in a small jar using the proper proportions of water and products. Follow the most restrictive of labeling directions and precautions. Do not exceed label rates

TABLE 1: Mixing Directions for Outdoor/Perimeter Applications

Application Volume: Gallons/1,000 sq. ft.	Use Rate: Grams/1,000 sq. ft.	Scoops* of Tempo® 20 WP Insecticide Diluted to These Volumes of Finished Spray			
		3 gal.	10 gal.	15 gal.	25 gal.
2	10	3	10	15	25
	20	6	20	30	50
5	10	1	4	6	10
	20	2	8	12	20
10	10	—	2	3	5
	20	—	4	6	10

*1 level scoop = 5 grams

FORMULA FOR DETERMINING THE PERCENT CONCENTRATION IN THE FINISHED SPRAY

$$\frac{\text{(Scoops of Tempo® 20 WP Insecticide)}}{\text{(Gallons of finished spray)}} \times 37.85 = \text{Percent Concentration}$$

APPLICATION FOR OUTDOOR/PERIMETER PESTS

Ants	Locate and treat ant nests, if possible. Follow trails of foraging workers, check under objects near the structure, and inspect other likely nest sites. If ants are nesting in the soil, thoroughly drench or inject the nest and surrounding soil. Treat ant trails around windows and doors, along sidewalks, or other areas where seen. Apply a perimeter treatment as described above.
Bees, Wasps, Yellow Jackets, Hornets removal	Use Rate: 0.1% concentration. Make pin stream applications directly to the nests. To help avoid stings treat nests in the evening when the insects are inside the nest. For best results, check nests within one or two days to ensure complete kill. Remove and destroy treated nests to prevent emergence of newly hatched insects, secondary pest problems, and possible staining from honey. If is not possible, retreat nests if necessary.
Boxelder Bugs	Apply directly to boxelder bugs that have congregated around doors and windows and similar areas where they may enter structures. Apply perimeter treatment as described above. For best results, treat infested trees early in the season. Tree spraying may require ornamental license—check with your local regulator.
Centipedes, Millipedes, Pillbugs, Sowbugs	Apply perimeter treatment to reduce the number of insects from entering the structure. Thoroughly treat mulched areas. Reduce moisture areas from around the structure.
Fire Ants	Use Rate: 0.1% concentration Thoroughly drench or inject the entire mound. When using injection treatment, you must treat the bottom of the mound. Apply dilution using a downward and upward motion of the injector tool. For complete distribution, inject in several points throughout the mound. Treat new mounds as they appear. Do not use in pastures or areas of food crop production.
Fleas & Ticks	Make a perimeter treatment, concentrating on areas where pets rest or run. For ticks, treat likely harborage areas like along paths, tall grass and other vegetation. For best results, treat the entire area where ticks could be present. Begin treating in the spring. Ticks may be re-introduced from surrounding areas by host animals. Continue treating until frost to control both larvae and adult ticks.

Flies	Use Rate: 0.05% to 0.1% Apply low-volume mist or spray to outside surfaces of buildings, porches, patios, garages, fences, and other areas where flies rest. CLUSTER FLY: Treat in late summer or fall, just before flies begin looking for winter shelter. Spray siding, eaves, around windows and doors, window screens, and attics. To help reduce infestations, treat cracks and crevices, attics and other indoor winter hiding places. Note: Cluster flies may appear during winter warm spells, while snow is still on the ground.
Mosquitoes	Spray around landscape plants, turf and ground cover, under decks, around building foundations and other places where mosquitoes may rest.
Scorpions	Treat around piles of firewood and other areas where scorpions may hide. When possible, remove piles of materials that can harbor the pests. Apply a perimeter treatment.

STORAGE AND DISPOSAL

Do not contaminate water, food, or feed by storage or disposal.

Pesticide Storage:	<ul style="list-style-type: none"> • Store in a cool, dry place and in such a manner as to prevent cross contamination with other pesticides, fertilizers, food, or feed. • Protect from freezing. • Store in original containers and out of the reach of children, preferably in a locked storage area. • Handle and open container in a manner as to prevent spillage.
Pesticide Disposal:	<ul style="list-style-type: none"> • Pesticide wastes are hazardous. • Improper disposal of excess pesticide, spray mixture, or rinsate is a violation of Federal law. • If these wastes cannot be disposed of by use according to label instructions, contact your State Pesticide or Environmental Control Agency, or the Hazardous Waste representative at the nearest EPA Regional Office for guidance.
Container Disposal:	<ul style="list-style-type: none"> • Non-refillable container. Do not reuse or refill this container. Offer for recycling, if available. Offer for reconditioning if appropriate. Triple rinse container (or equivalent) promptly after emptying. Triple rinse as follows: Empty the remaining contents into the application equipment or a mix tank. Fill the container 1/4 full with water and recap. Shake for 10 seconds. Pour rinsate into application equipment or a mix tank or store rinsate for later use or disposal. Drain for 10 seconds after the flow begins to drip. Repeat this procedure two more times. • Do not use container in connection with food, feed, or drinking water. • Completely empty container into application equipment. Triple rinse, or equivalent. • Dispose of container by offering for recycling or reconditioning. Or puncture and dispose of container in a sanitary landfill, or by incineration, or, if allowed by state and local authorities by burning. If burned, stay out of smoke.
Spills:	<p>If the container is leaking or material is spilled for any reason or cause, carefully sweep material into a pile. Refer to Precautionary Statements on label for hazards associated with the handling of this material.</p> <ul style="list-style-type: none"> • Do not walk through spilled material. • Dispose of as directed for pesticides above. • Keep unauthorized people away. • You may contact the Bayer Emergency Response Team for decontamination procedures or any other assistance at 1-800-414-0244 or contact Chemtec at 1-800-424-9300.

CONDITIONS OF SALE. Read Before Using.

THE DIRECTIONS ON THIS LABEL WERE DETERMINED THROUGH RESEARCH TO BE APPROPRIATE FOR THE CORRECT USE OF THIS PRODUCT. THIS PRODUCT HAS BEEN TESTED UNDER DIFFERENT ENVIRONMENTAL CONDITIONS BOTH INDOORS AND OUTDOORS SIMILAR TO THOSE THAT ARE ORDINARY AND CUSTOMARY WHERE THE PRODUCT IS TO BE USED. INSUFFICIENT CONTROL OF PESTS OR PLANT INJURY MAY RESULT FROM THE OCCURRENCE OF EXTRAORDINARY OR UNUSUAL CONDITIONS, OR FROM FAILURE TO FOLLOW LABEL DIRECTIONS. IN ADDITION, FAILURE TO FOLLOW LABEL DIRECTIONS MAY CAUSE INJURY TO ANIMALS, MAN, AND DAMAGE TO THE ENVIRONMENT. BAYER OFFERS, AND THE BUYER ACCEPTS AND USES, THIS PRODUCT SUBJECT TO THE CONDITIONS THAT EXTRAORDINARY OR UNUSUAL ENVIRONMENTAL CONDITIONS, OR FAILURE TO FOLLOW LABEL DIRECTIONS ARE BEYOND THE CONTROL OF BAYER AND ARE, THEREFORE, THE RESPONSIBILITY OF THE BUYER. ©2011 Bayer HealthCare LLC

APPENDIX

Use Tempo® 20 WP Insecticide as a general surface, spot, mist, or crack and crevice treatment. Permitted areas of use in buildings and structures include, *but are not limited to:*

- dairies and dairy product processing plants
- grain mills
- granaries
- livestock housing
- pet kennels
- poultry houses
- warehouses

08711286-035999, R.9 3550404 16348 GHG112113



Manufactured for Bayer HealthCare LLC, Animal Health Division
Shawnee Mission, Kansas 66201 USA
Product of India
Bayer, the Bayer Cross and Tempo are registered trademarks of Bayer.