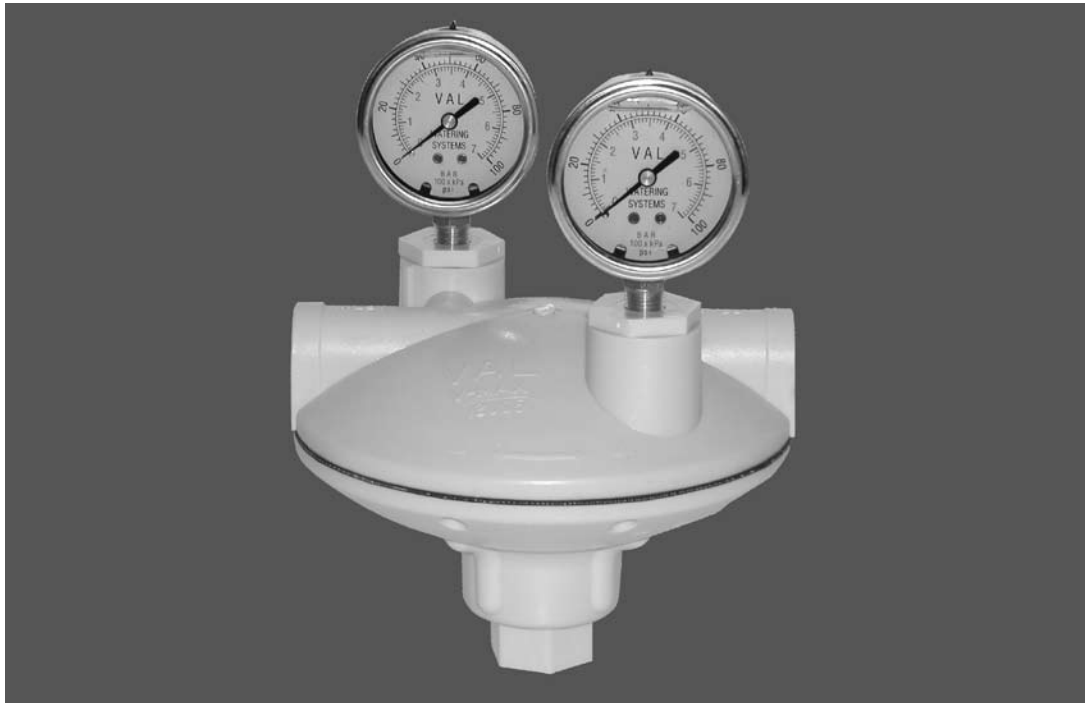




# V-MAX VR-205 HIGH PRESSURE REGULATOR



## HIGH PRESSURE REGULATOR KITS (Check kit for the Following Parts)

REG KIT VR205	REG KIT VR205-1	REG KIT VR205-2	PART NO.	PART DESCRIPTION
1	1	1	12005	High Pressure Regulator
2	2	2	VT131	3/4" Male Adapter
0	1	2	VG100	Oil Filled SS Pressure Gauge
2	1	0	VRP59	1/4" NPT Plug

**Important:** Inlet and outlet pressure can be measured at the high pressure regulator with regulator kit VR205-2. Regular kits VR205 and VR205-1 are the same as regulator kit VR205-2 except VR205 has no pressure gauges and VR205-1, one pressure gauge.

### ASSEMBLY INSTRUCTIONS

1. Wrap 4 or 5 turns of Teflon tape around each 3/4" male adapter and screw 1 each into inlet and outlet of 12005 regulator.  
*Do not over tighten as you could crack regulator top housing.*
2. When using in regulator kits VR205-1 and VR205 wrap 4 or 5 turns of Teflon tape around 1/4" NPT plugs and tighten with wrench.
3. Wrap 4 or 5 turns of Teflon tape around gauge(s) and hand tighten into top of regulator.
4. Install in line after the filter system and before any medicator or water treatment installation.

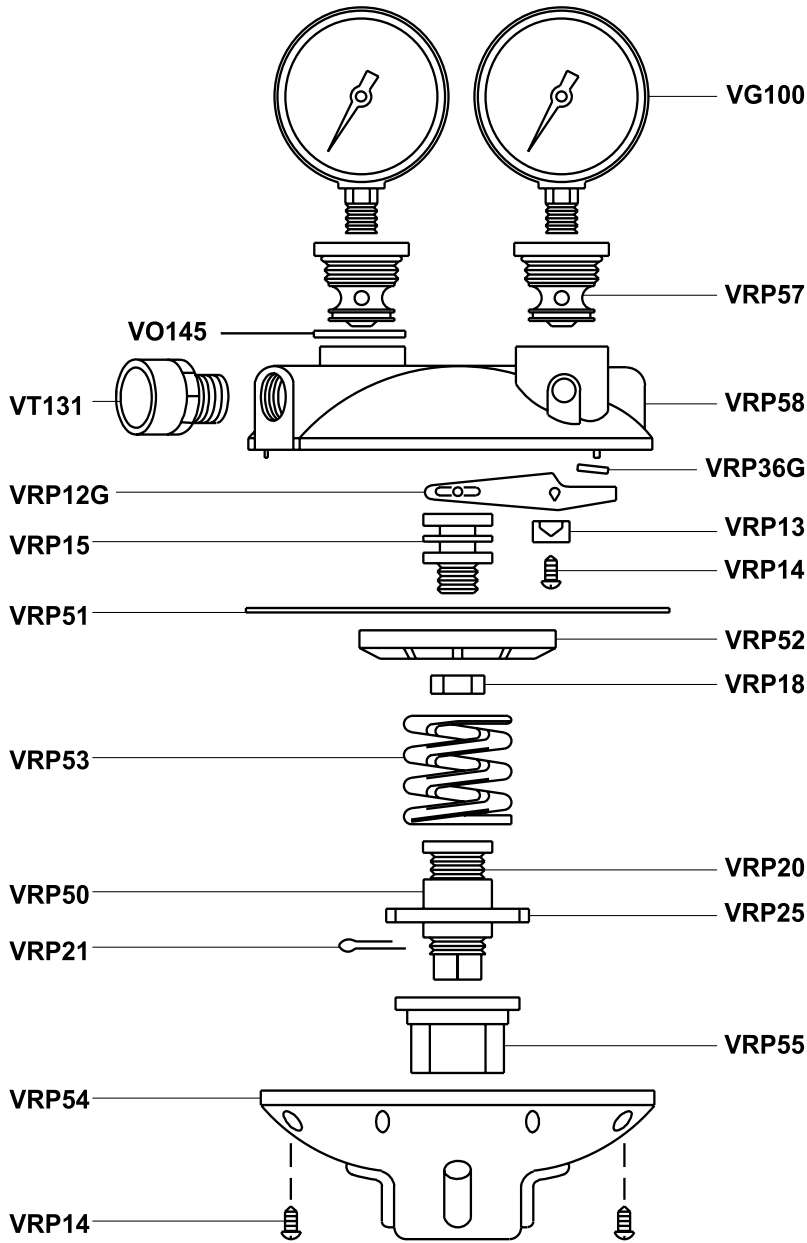
### OPERATING INSTRUCTIONS

Turn adjustment knob with wrench in a clockwise direction to increase pressure. Maximum outlet pressure is 30 lb. Make sure all lines on output of regulator have chance to fill before making final adjustments! Do not over tighten adjustment knob with wrench. Over tightening could break internal plastic parts.

**The high pressure regulator should be used when incoming water fluctuates more than 20 PSI (1.7 Bar). To maintain even pressure in all low pressure nipple lines in poultry house, set the outlet pressure at least as low as the lowest pump pressure setting, which will maintain an even outlet pressure. Do not set the outgoing water pressure below 25 PSI.**

# V-MAX VR-205

## High Pressure Regulator



## WARRANTY

VAL-CO DISCLAIMS ALL LIABILITY FOR CONSEQUENTIAL DAMAGES OF ANY KIND. THERE IS NO WARRANTY OF MERCHANTABILITY, EXPRESS OR IMPLIED, AND THERE ARE NO WARRANTIES WHICH EXTEND BEYOND THE DESCRIPTION OF THE FACE HEREOF.

This guarantee covers VAL-CO Regulators only. VAL-CO Regulators which prove to be defective in workmanship or material within 1 year of the date of purchase (as recorded above), will be replaced or repaired free of charge, excluding labor, F.O.B. Lancaster, PA, U.S.A.

All defective regulators must be returned to us for review, study, and determination as to the reason for being defective. The guarantee or warranty does not cover malfunction or breakage caused by alteration, misuse, neglect, accident, or chemicals added or found in water, or poor quality water, or failure to install and operate correctly. VAL-CO reserves the right to make changes, alter specifications or change models at any time without obligation or notice. No representative of VAL-CO or any agent, distributor, representative or dealer, may make any warranty or guarantee other than contained herein.

## VR-205 Parts List

Part No.	Description
VG100	Gauge (when VRP59 is NOT used)
VO145	O-Ring (2)
VRP12G	Pivot (for Green Seal)
VRP13	2 Pivot Brackets
VRP14	Screws [(2) Pivot Bracket or (9) Bottom Housing]
VRP15	Diaphragm Bolt
VRP18	Diaphragm Nut
VRP20	Adjustment Bolt
VRP21	Adjustment Bolt Pin
VRP25	Adjustment Collar
VRP36G	Seal (Green)
VRP50	Diaphragm Spacer
VRP51	Diaphragm
VRP52	Diaphragm Plate
VRP53	Spring
VRP54	Bottom Housing 12005
VRP55	Adjustment Knob
VRP57	Gauge Intake
VRP58	Top Housing 12005 Regulator
VRP59	1/4" NPT Plug (when VG100 is NOT used)
VT131	White 3/4" Male Adapter

## WARNING

1. Do not overtighten any screws or nuts
2. Do not use pipe compound on threads.
3. Avoid all regulator contact with oil base materials.



### North America:

Phone: 800.99VALCO

Fax: 419.678.2200

sales@valcompanies.com

### International:

Phone: 717.392.3978

Fax: 717.735.1800

intl.sales@valcompanies.com